

SCS ENGINEERS

ENVIRONMENTAL CONSULTANTS
6601 KOLL CENTER PARKWAY, SUITE 140
PLEASANTON, CALIFORNIA 94566
PH. (925) 426-0080 FAX. (925) 426-0707

PROJ. NO.: 01210155.00	DWN. BY: ATV	ACAD FILE: FIGURE 1
DATE: 3/07/11	CHK. BY: AAM	APP. BY: JJM

SHEET TITLE:

VICINITY MAP

PROJECT TITLE:

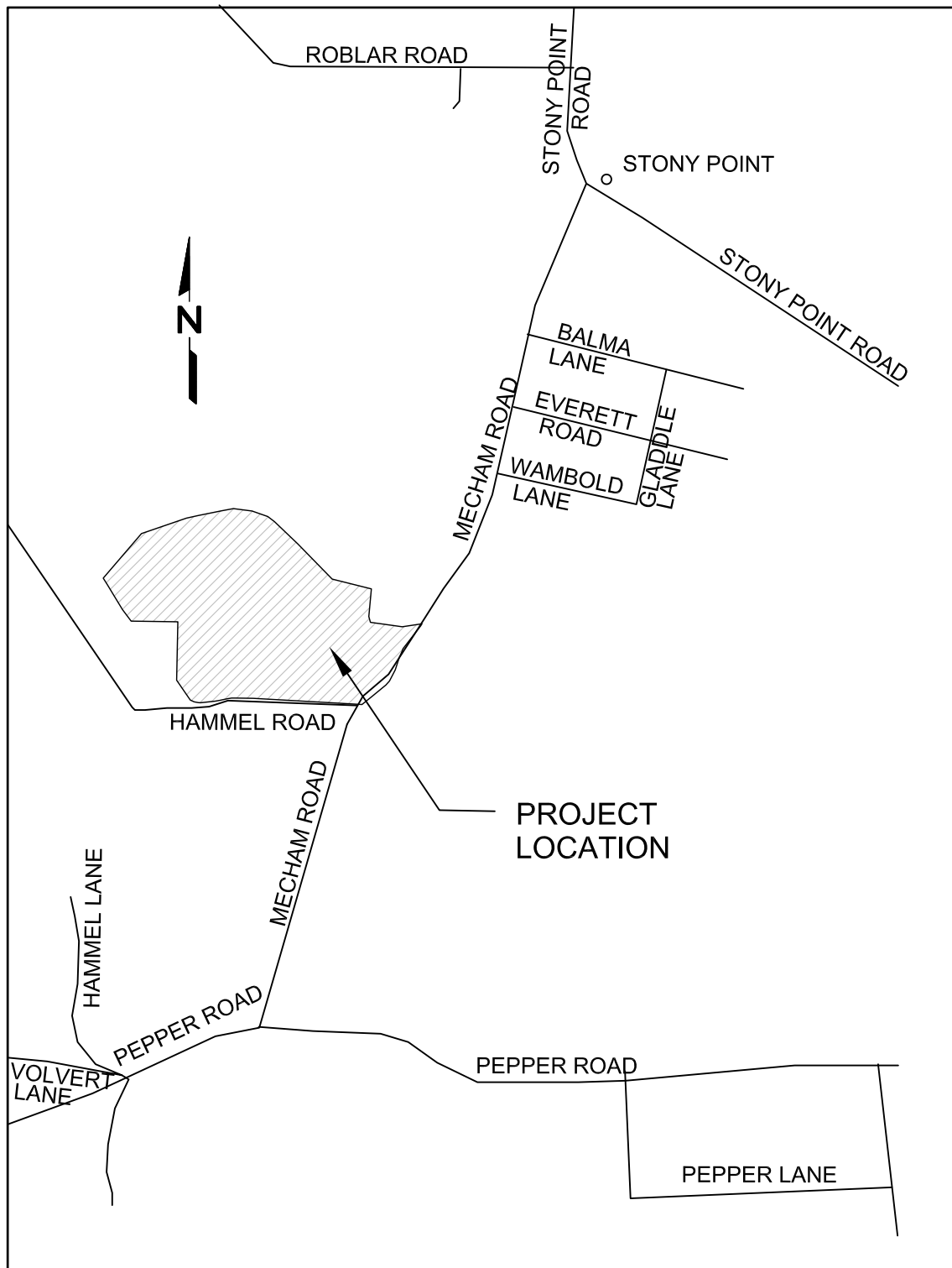
14.4-ACRE SOUTH FACE PARTIAL FINAL CLOSURE
SONOMA CENTRAL DISPOSAL SITE
SONOMA COUNTY, CALIFORNIA

SCALE:

N.T.S.

FIGURE:

1



SCS ENGINEERS

ENVIRONMENTAL CONSULTANTS

6601 KOLL CENTER PARKWAY, SUITE 140
PLEASANTON, CALIFORNIA 94566
PH. (925) 426-0080 FAX. (925) 426-0707

PROJ. NO.: 01210155.00	DWN. BY: ATV	ACAD FILE: FIGURE 2
DATE: 3/08/11	CHK. BY: AAM	APP. BY: JJM

SHEET TITLE:

LOCATION MAP

PROJECT TITLE:

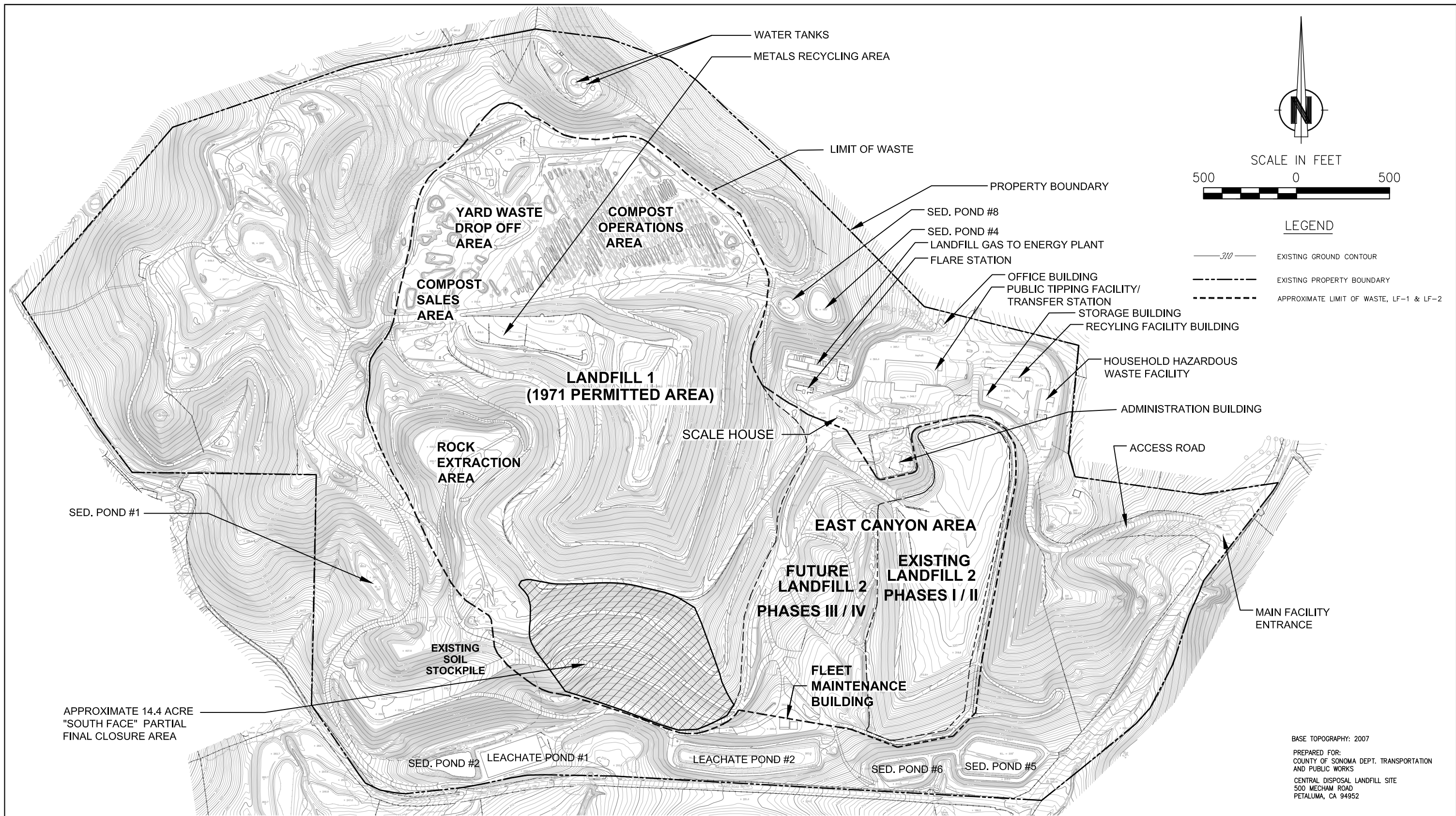
14.4-ACRE SOUTH FACE PARTIAL FINAL CLOSURE
SONOMA CENTRAL DISPOSAL SITE
SONOMA COUNTY, CALIFORNIA

SCALE:

N.T.S.

FIGURE NO.:

2



BASE TOPOGRAPHY: 2007
 PREPARED FOR:
 COUNTY OF SONOMA DEPT. TRANSPORTATION
 AND PUBLIC WORKS
 CENTRAL DISPOSAL LANDFILL SITE
 500 MECHAM ROAD
 PETALUMA, CA 94952

SCS ENGINEERS

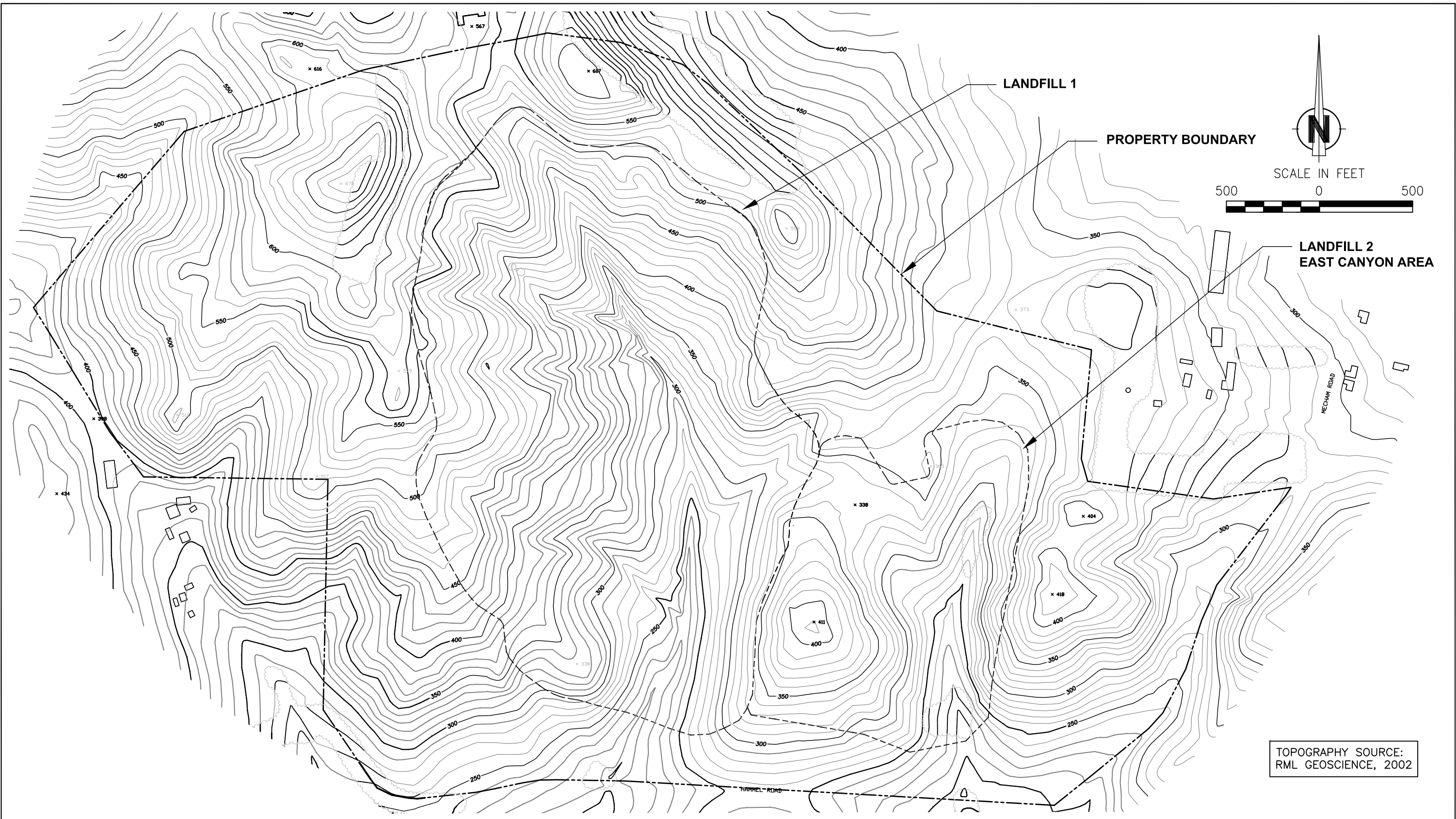
ENVIRONMENTAL CONSULTANTS

6601 KOLL CENTER PARKWAY, SUITE 140
 PLEASANTON, CALIFORNIA 94566
 PH. (925) 426-0080 FAX. (925) 426-0707

PROJ. NO.	01210155.00	DWN. BY:	ATV	ACAD FILE:	FIGURE 3
DSN. BY:	ATV	CHK. BY:	AAM	APP. BY:	JJM

COUNTY OF SONOMA, DEPTMENT OF
 TRANSPORTATION AND PUBLIC WORKS
 PETALUMA, CALIFORNIA

SHEET TITLE: SITE PLAN	DATE: 03/08/11
PROJECT TITLE: 14.4-ACRE SOUTH FACE PARTIAL FINAL CLOSURE SONOMA CENTRAL DISPOSAL SITE SONOMA COUNTY, CALIFORNIA	SCALE: AS SHOWN
	FIGURE: 3

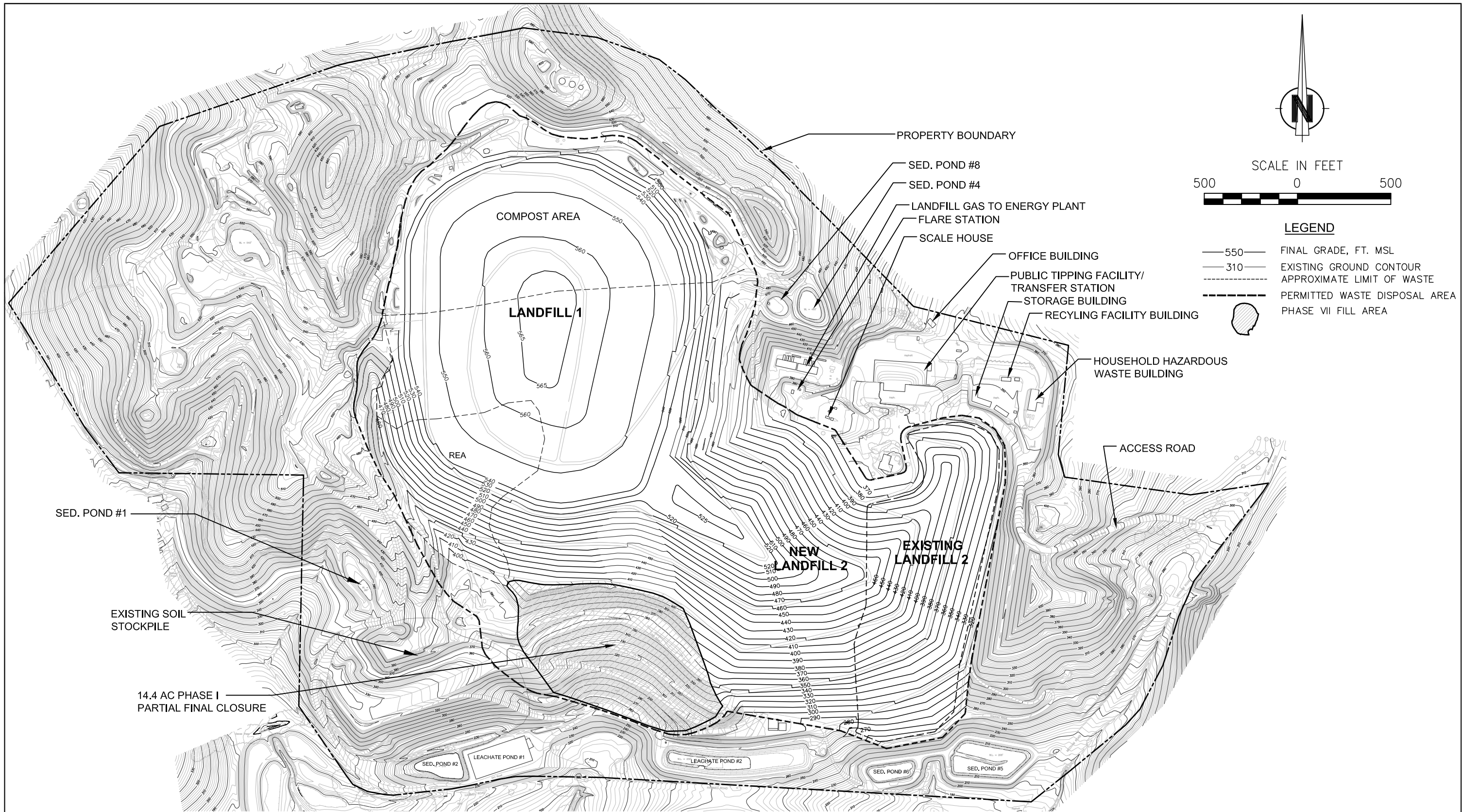


SCS ENGINEERS		
ENVIRONMENTAL CONSULTANTS		
6601 KOLL CENTER PARKWAY, SUITE 140 PLEASANTON, CALIFORNIA 94566 PH. (925) 426-0080 FAX. (925) 426-0707		
PROJ. NO. 01210155.00	DWN. BY: ATV	ACAD FILE: FIGURE 4.DWG
DSN. BY: ATV	CHK. BY: AAM	APP. BY: JJM

COUNTY OF SONOMA, DEPTMENT OF
TRANSPORTATION AND PUBLIC WORKS
PETALUMA, CALIFORNIA

SHEET TITLE:	PRE-LANDFILL TOPOGRAPHIC MAP
PROJECT TITLE:	14.4-ACRE SOUTH FACE PARTIAL FINAL CLOSURE SONOMA CENTRAL DISPOSAL SITE SONOMA COUNTY, CALIFORNIA

DATE:	3/08/11
SCALE:	AS SHOWN
FIGURE:	4



SCS ENGINEERS

ENVIRONMENTAL CONSULTANTS

6601 KOLL CENTER PARKWAY, SUITE 140
PLEASANTON, CALIFORNIA 94566
PH. (925) 426-0080 FAX. (925) 426-0707

PROJ. NO. 01210155.00

DSN. BY: ATV

DWN. BY: ATV

CHK. BY: AAM

ACAD FILE: FIGURE 5

APP. BY: JJM

COUNTY OF SONOMA, DEPTMENT OF
TRANSPORTATION AND PUBLIC WORKS
PETALUMA, CALIFORNIA

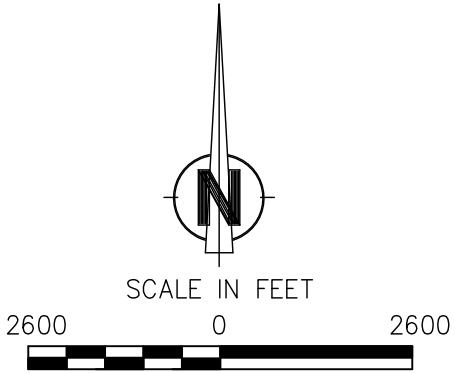
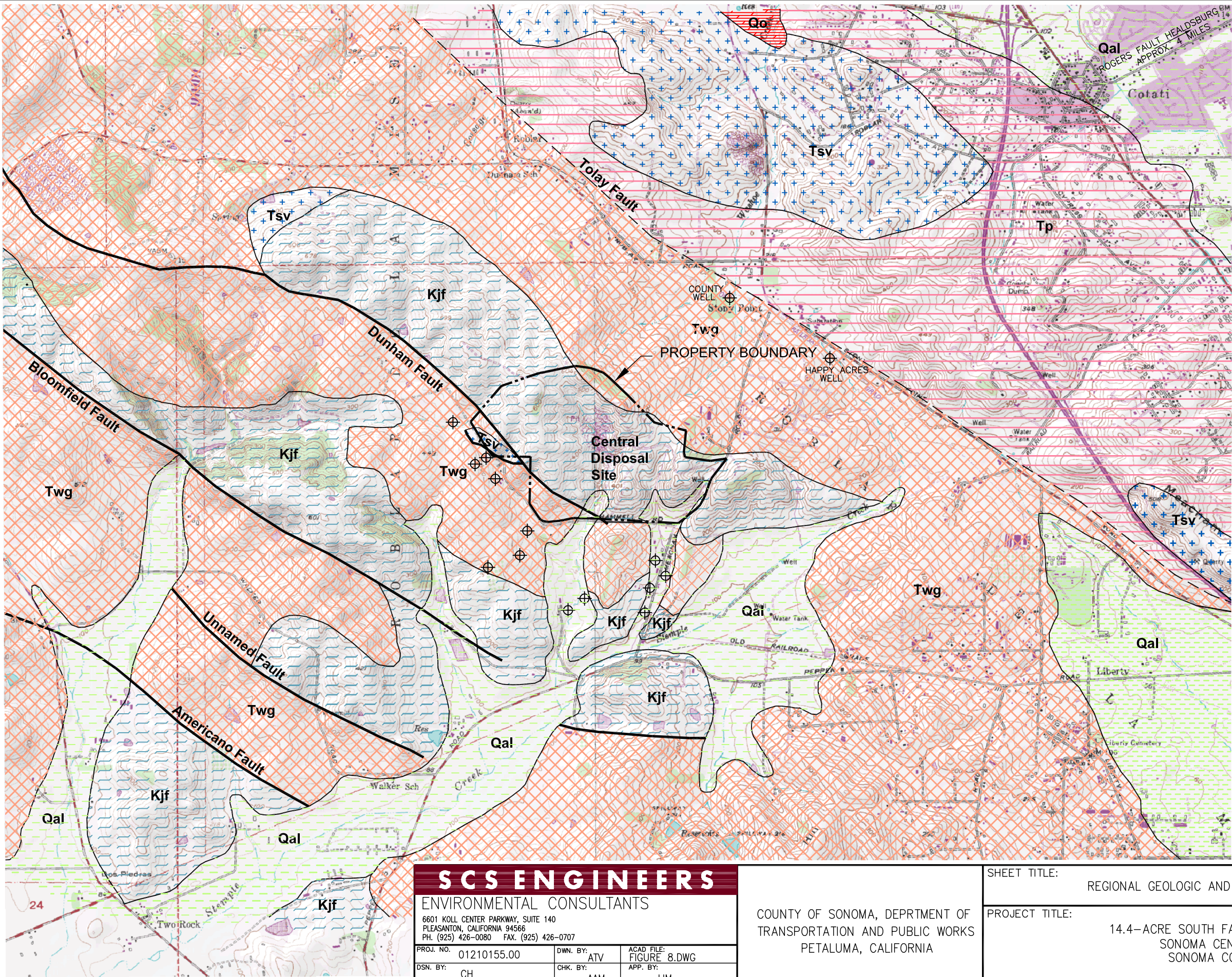
SHEET TITLE:
PRELIMINARY FINAL GRADING PLAN

PROJECT TITLE:
14.4-ACRE SOUTH FACE PARTIAL FINAL CLOSURE
SONOMA CENTRAL DISPOSAL SITE
SONOMA COUNTY, CALIFORNIA

DATE: 3/09/11

SCALE: AS SHOWN

FIGURE: 5



- LEGEND
- Qal** QUATERNARY ALLUVIAL/COLLUVIAL DEPOSITS
 - Qo** OLDER QUATERNARY DEPOSITS
 - Twg** WILSON GROVE FORMATION
 - Tp** PETALUMA FORMATION
 - Tsv** SONOMA VOLCANICS
 - Kjf** FRANCISCAN FORMATION
 - LITHOLOGIC CONTACT
 - - - FAULT; DASHED WHERE INFERRED
 - - - - - PROPERTY BOUNDARY
 - ⊕ OFFSITE GROUNDWATER WELL

MAP ADAPTED FROM:
TABER (1987), HERZOG
(1993) WOODWORD-
CLYDE (1997), AND
WAGNER AND
BORTUGNO (1992)

ALL CONTACTS AND
FAULTS TRACES
ARE APPROXIMATE.

SCS ENGINEERS
ENVIRONMENTAL CONSULTANTS
6601 KOLL CENTER PARKWAY, SUITE 140
PLEASANTON, CALIFORNIA 94566
PH. (925) 426-0080 FAX. (925) 426-0707

PROJ. NO.	01210155.00	DWN. BY:	ATV	ACAD. FILE:	FIGURE 8.DWG
DSN. BY:	CH	CHK. BY:	AAM	APP. BY:	JJM

COUNTY OF SONOMA, DEPTMENT OF
TRANSPORTATION AND PUBLIC WORKS
PETALUMA, CALIFORNIA

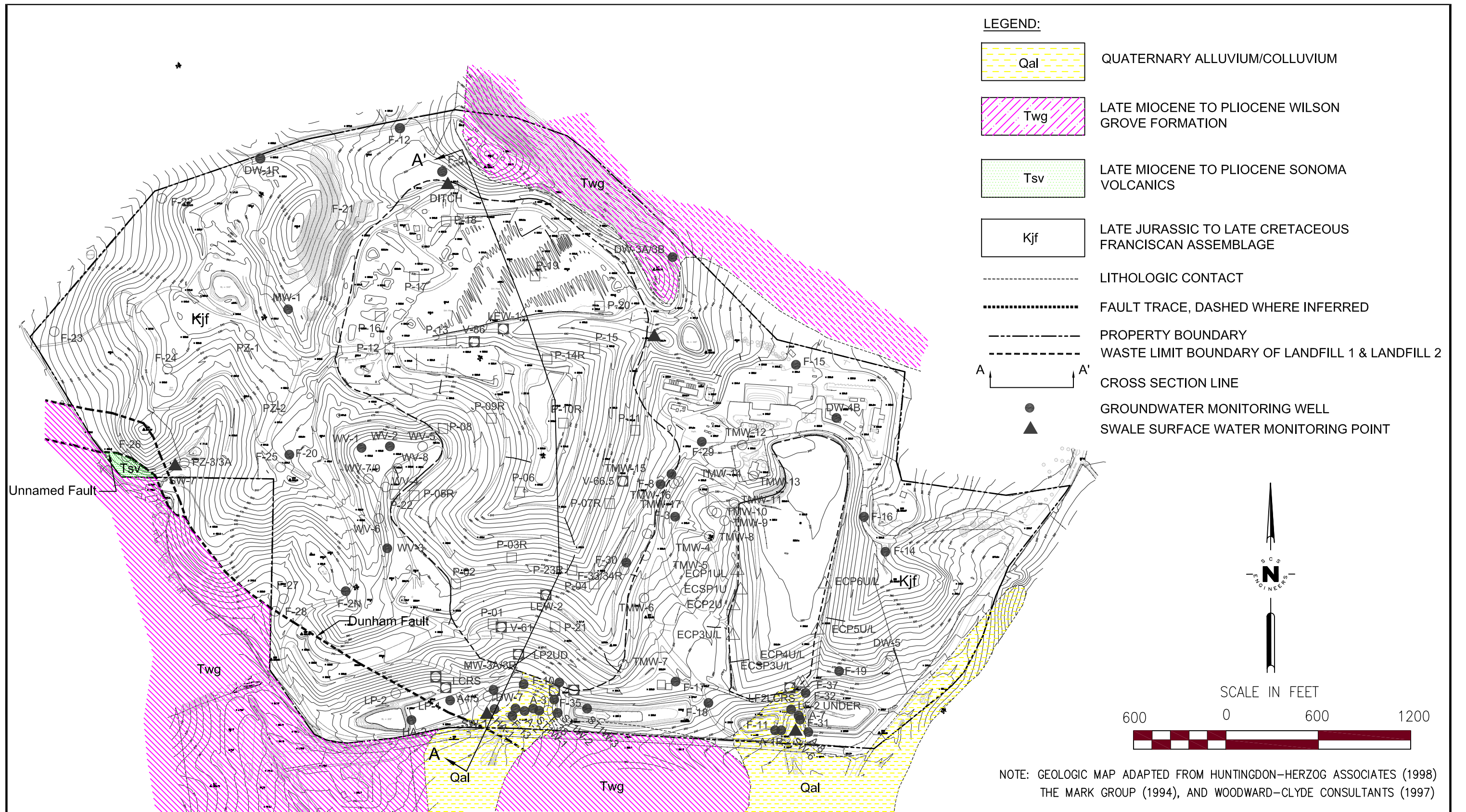
SHEET TITLE:
REGIONAL GEOLOGIC AND FAULT TRACE MAP

PROJECT TITLE:
14.4-ACRE SOUTH FACE PARTIAL FINAL CLOSURE
SONOMA CENTRAL DISPOSAL SITE
SONOMA COUNTY, CALIFORNIA

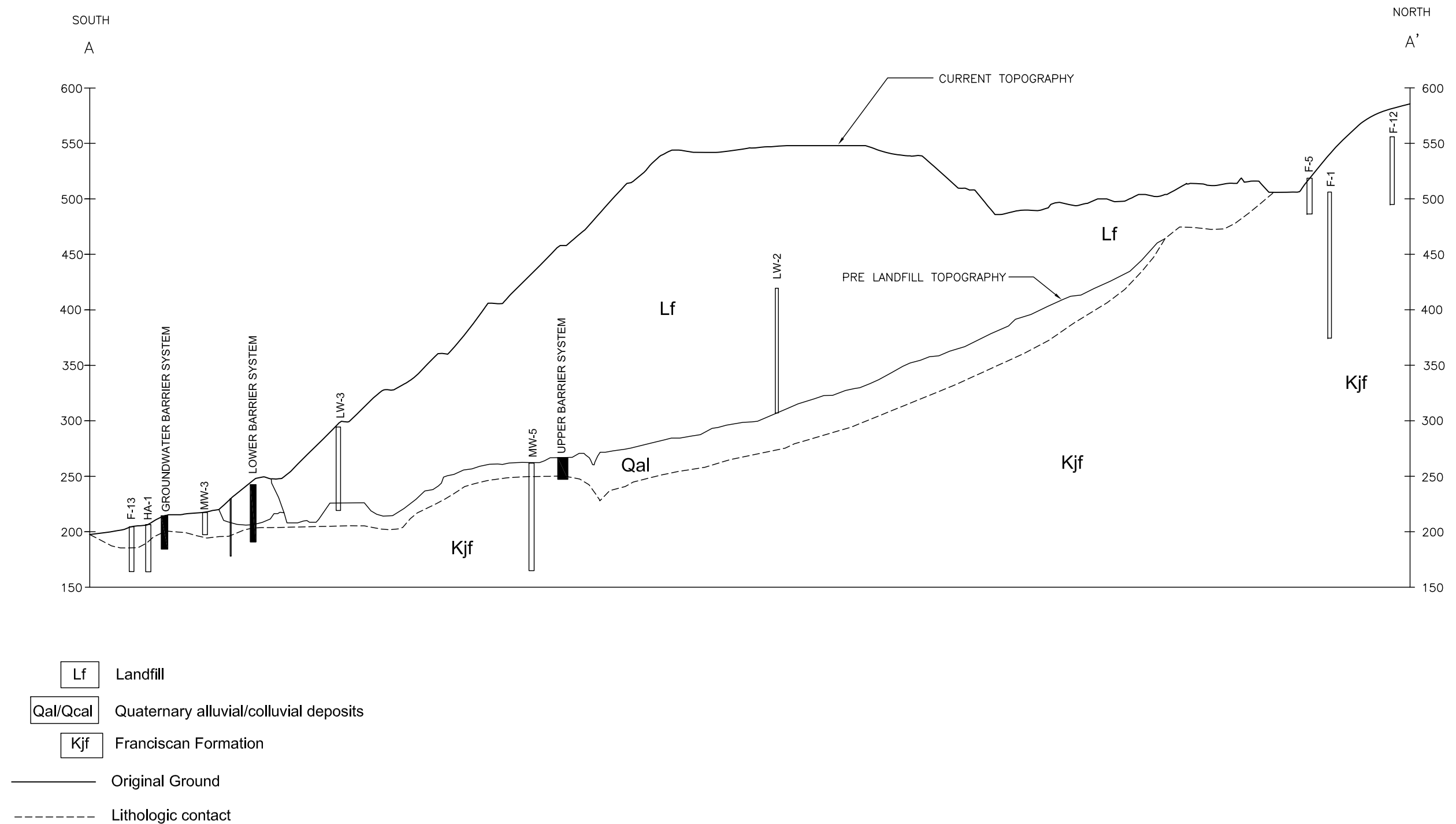
DATE:
3/08/11

SCALE:
AS SHOWN

FIGURE:
6



SCS ENGINEERS ENVIRONMENTAL CONSULTANTS 6601 KOLL CENTER PARKWAY, SUITE 140 PLEASANTON, CALIFORNIA 94566 PH. (925) 426-0080 FAX. (925) 426-0707			COUNTY OF SONOMA, DEPTMENT OF TRANSPORTATION AND PUBLIC WORKS PETALUMA, CALIFORNIA	SHEET TITLE: SITE GEOLOGIC MAP	DATE: 3/08/11
PROJ. NO. 01210155.00	DWN. BY: ATV	ACAD FILE: FIGURE 7.DWG		PROJECT TITLE: 14.4-ACRE SOUTH FACE PARTIAL FINAL CLOSURE SONOMA CENTRAL DISPOSAL SITE SONOMA COUNTY, CALIFORNIA	SCALE: AS SHOWN
DSN. BY: CH	CHK. BY: AAM	APP. BY: JJM			FIGURE: 7



See Figure 7 for Section Line

References:
Shaw EMCON/OWT (2005)
Pacific Geoscience (2009)

SCS ENGINEERS		
ENVIRONMENTAL CONSULTANTS		
6601 KOLL CENTER PARKWAY, SUITE 140 PLEASANTON, CALIFORNIA 94566 PH. (925) 426-0080 FAX. (925) 426-0707		
PROJ. NO. 01210155.00	DWN. BY: ATV	ACAD FILE: FIGURE 8.DWG
DSN. BY: CH	CHK. BY: AAM	APP. BY: JJM

COUNTY OF SONOMA, DEPTMENT OF
TRANSPORTATION AND PUBLIC WORKS
PETALUMA, CALIFORNIA

SHEET TITLE:	LANDFILL-1 GEOLOGIC CROSS SECTION
PROJECT TITLE:	14.4-ACRE SOUTH FACE PARTIAL FINAL CLOSURE SONOMA CENTRAL DISPOSAL SITE SONOMA COUNTY, CALIFORNIA

DATE:	3/08/11
SCALE:	AS SHOWN
FIGURE:	8

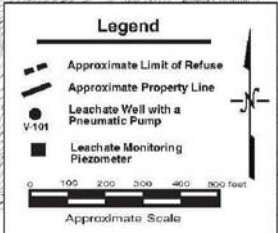


SCS ENGINEERS		
ENVIRONMENTAL CONSULTANTS		
6601 KOLL CENTER PARKWAY, SUITE 140 PLEASANTON, CALIFORNIA 94566 PH. (925) 426-0080 FAX. (925) 426-0707		
PROJ. NO. 01210155.00	DWN. BY: ATV	ACAD FILE: FIGURE 10
DSN. BY: ATV	CHK. BY: AAM	APP. BY: JJM

COUNTY OF SONOMA, DEPTMENT OF
TRANSPORTATION AND PUBLIC WORKS
PETALUMA, CALIFORNIA

SHEET TITLE:	EXISTING LANDFILL GAS COLLECTION, CONTROL AND MONITORING SYSTEM
PROJECT TITLE:	14.4-ACRE SOUTH FACE PARTIAL FINAL CLOSURE SONOMA CENTRAL DISPOSAL SITE SONOMA COUNTY, CALIFORNIA

DATE:	3/08/11
SCALE:	AS SHOWN
EXHIBIT	10



SHEET TITLE:

EXISTING LEACHATE MANAGEMENT SYSTEM

PROJECT TITLE:

14.4-ACRE SOUTH FACE PARTIAL FINAL CLOSURE
SONOMA CENTRAL DISPOSAL SITE
SONOMA COUNTY, CALIFORNIA

SCALE:

N.T.S.

FIGURE:

12